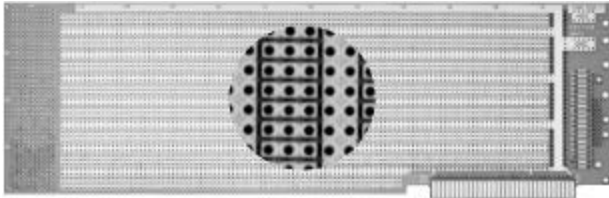


IBM PC, XT



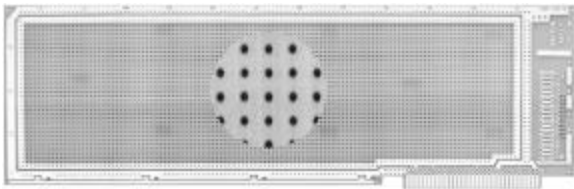
4613

Circuit Pattern:
Contacts:
Width/Thick:
Height:
16-Pin DIP Capacity:
Material:
V/G Terminals:
Socket Pins:
Extender:
Hole Diameter:

IBM PC, XT

3-Hole Solder Pad
 31/62 @ .1" Ctrs
 Ni/Gold
 13.25"/.062"
 4.2"
 93
 FR4 Epoxy Glass
 T44, T46, T49, T68
 R32
 3690-26
 .042"

- 3-Hole Solder Pads (0.28" x 0.080"0 for interconnecting multiple component leads
- I/O mounting area for 37-pin D-subminiature and ribbon cable connectors
- Mounting Bracket and hardware kit included (HD36B)
- Layout paper and instructions included



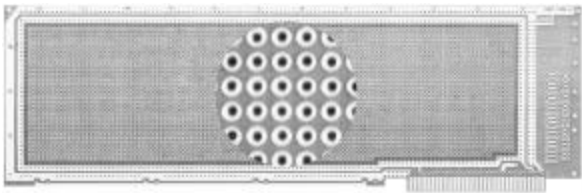
4613-1

Circuit Pattern:
Contacts:
Width/Thick:
Height:
16-Pin DIP Capacity:
Material:
V/G Terminals:
Socket Pins:
Extender:
Hole Diameter:

IBM PC, XT

Peripheral Buses
 31/62 @ .1" Ctrs
 Ni/Gold
 13.25"/.062"
 4.2"
 93
 FR4 Epoxy Glass
 T44, T46, T49, T68
 R32
 3690-26
 .042"

- Voltage and ground buses around board perimeter, both sides
- Auxiliary bus line along lower edge of board, both sides
- I/O mounting area for 37-pin D-subminiature and ribbon cable connectors
- Mounting Bracket and hardware kit included (HD36B)
- Layout paper and instructions included



4613-3

Circuit Pattern:
Contacts:
Width/Thick:
Height:
16-Pin DIP Capacity:
Material:
V/G Terminals:
Socket Pins:
Extender:
Hole Diameter:

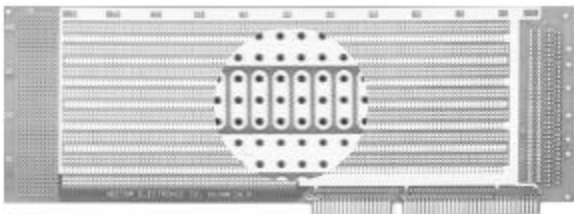
IBM PC, XT

Pad-Per-Hole
 31/62 @ .1" Ctrs
 Ni/Gold
 13.25"/.062"
 4.2"
 154
 FR4 Epoxy Glass
 T44, T46, T49, T68
 R32
 3690-26
 .042"

- Plated-thru holes
- Voltage and ground buses around board perimeter
- I/O mounting area for 37-pin D-subminiature and ribbon cable connectors
- Mounting Bracket and hardware kit included (HD36B)

Vectorbord

IBM AT/ISA



4617

Circuit Pattern:
Contacts:
Width/Thick:
Height:
16-Pin DIP Capacity:
Material:
V/G Terminals:
Socket Pins:
Extender:
Hole Diameter:

IBM AT/ISA

3-hole Solder Pad
 98 @ .1" Ctrs
 Ni/Gold
 13.25"/.062"
 4.5"
 44
 FR4 Epoxy Glass
 T44, T46, T49, T68
 R32
 3690-26, 3690-26-1
 .042"

- 3-Hole Solder Pads (0.28" x 0.080"0 for interconnecting multiple component leads
- 10 x 42 hole grid unrestricted component placement area
- I/O mounting area for 37-pin D-subminiature and ribbon cable connectors
- Mounting Bracket and hardware kit included (HD36B)
- Layout paper and instructions included
- Row and column legends provided